



A quarterly newsletter produced and distributed by the Palouse Conservation District— bringing you news and updates on conservation efforts within SE Whitman County

Palouse News

Mark your Calendar: Annual Listening Session

The Palouse Conservation District will be holding an Annual Listening Session on Wednesday, February 18, 2015, from 6:00pm-8:00pm at the Schweitzer (SEL) Event Center located at 1825 Schweitzer Drive in Pullman. Join us for dinner while you share your input regarding important conservation needs in the Palouse Conservation District.

To RSVP Please contact Pam at 509-332-4101 or pamf@palousecd.org
Please join us for the Annual Listening Session. We need YOUR input to direct YOUR Conservation District's programs and services for next year!

A few options if you are not available to join us for the listening session: 1) fill out the comment card located on page 5 and return it to our office, 2) call our office and share your thoughts, or 3) stop by our office for a visit.

For questions please contact Pam at 509-332-4101 or pamf@palousecd.org

Cost-Share Now Available

Palouse Conservation District has cost-share available for projects that improve soil health, reduce erosion, improve grazing lands, establish or enhance native vegetation, restore riparian areas, improve wildlife habitat...

Protect valuable natural resources and improve your land and/or operation

Projects must meet NRCS standards and specs

Call today to start a cost-share application (509)332-4101



Did you know that you can receive the Palouse News electronically right to your e-mail Inbox?

Simply call or email our office and we will put you on our electronic mailing list. You can also go to our website: www.palousecd.org where you will find the Palouse News filed under "Newsletters".

If for any reason you want to be removed from our mailing list please let us know.

Community Discussion: Riparian Area Management Thursday, December 11, 2014

Plan to participate in a producer and landowner led discussion of riparian area management incentives needed on the Palouse...and lunch too!

Purpose: Producer and landowner led thinking session on a "Palouse Specific" incentive program for riparian conservation and management built from producer and landowner ideas.

Invited Participants: Whitman and Spokane County producers and landowners

Date: Thursday, December 11, 2014

Time: Noon to 4:00 pm

Location: SEL Event Center, 1825 Schweitzer Drive, Pullman, WA 99163

Sponsored by: Whitman, Palouse, Spokane, Palouse-Rock Lake, and Pine Creek Conservation Districts Board members, staff and the Washington Conservation Commission

RSVP: Please email Ray Ledgerwood at ray.ledgerwood@scc.wa.gov to reserve your spot

Agenda:

- Opening Comments & Lunch
- Discussion of riparian area management incentives needed for the Palouse
- Examples of current riparian management already underway & programs available
- Next Steps & Close

Follow-up: Once a vision is identified, the conservation district board members and staff can examine various funding sources, revisions and use of current programs, or the development of a new program to match the producer and landowner ideas for "Palouse Specific" riparian management incentives. Conservation opportunities will be communicated to participants.



Burning Issues: Refund Deadline

**Burn permit refund requests must be received by
December 31st**

Please contact Pam at (509) 332-4101 or pamf@palouscd.org

Palouse Conservation District 2015 TREE SALE
ORDER NOW! PRE ORDER DEADLINE is December 15th 2014

PICK UP TREES APRIL 3rd 9:00am to 4:30pm & 4th 9:00am to 1:00 pm

*****PLEASE READ ORDERING INSTRUCTIONS ON THE BACK OF THIS ORDER FORM*****

You can also find order forms and species descriptions online at <http://www.palousecd.org/>

NAME _____	DATE _____
ADDRESS _____	HOME PHONE _____
E-MAIL ADDRESS _____	CELL PHONE _____

Would you like to receive our quarterly newsletter? ☐ NO ☐ YES (☐ mail or ☐ electronic copy)

*Trees and shrubs marked with asterisk are native to Eastern Washington

SPECIES	QUANTITY	\$ AMOUNT
10 TREES IN A BUNDLE @ \$15.00 A BUNDLE		
AUSTRIAN PINE	_____	_____
COLORADO BLUE SPRUCE	_____	_____
DOUGLAS FIR	_____	_____
GRAND FIR	_____	_____
PONDEROSA PINE	_____	_____
		Total = _____
10 TREES IN A BUNDLE @ \$16.00 A BUNDLE		
WESTERN HEMLOCK	_____	_____
WESTERN LARCH (Tamarack)	_____	_____
WESTERN WHITE PINE	_____	_____
WESTERN RED CEDAR	_____	_____
		Total = _____
10 TREES IN A BUNDLE @ \$19.00 A BUNDLE		
OREGON GRAPE, Tall	_____	_____
QUAKING ASPEN	_____	_____
MOCK ORANGE (Syringa)	_____	_____
ROCKY MOUNTAIN MAPLE	_____	_____
CASCARA	_____	_____
		Total = _____
10 SHRUBS IN A BUNDLE @ 17.00 A BUNDLE		
BLACK HAWTHORN	_____	_____
BLUE ELDERBERRY	_____	_____
RED OSIER DOGWOOD	_____	_____
SERVICEBERRY	_____	_____
SNOWBERRY	_____	_____
WOODS ROSE	_____	_____
CHOKECHERRY	_____	_____
		Total = _____
BUNDLES OF 10-36" CUTTINGS @ \$15.00 A BUNDLE		
COYOTE WILLOW	_____	_____
COTTONWOOD	_____	_____
DRUMMOND WILLOW	_____	_____
MACKENZIE WILLOW	_____	_____
PACIFIC WILLOW	_____	_____
PEACHLEAF WILLOW	_____	_____
RED OSIER DOGWOOD	_____	_____
		Total = _____
PLEASE COMPLETE AND MAKE		SUB-TOTAL _____
CHECKS PAYABLE TO:		Add 7.8% Sales Tax _____
Palouse CD		BALANCE DUE _____

1300 NE Henley Ct #6
 Pullman, WA 99163

pamf@palousecd.org

OR CALL PCD OFFICE (509) 332-4101

cut along the dotted line

Palouse Conservation District 2015 TREE SALE

ORDER NOW! PRE ORDER DEADLINE is December 15th 2014

PICK UP TREES APRIL 3rd 9:00am to 4:30pm & 4th 9:00am to 1:00 pm

Ordering Instructions

1. Include your personal information. PLEASE INCLUDE YOUR EMAIL ADDRESS (if you have one). If you do not have an email address, please include your phone # so we can contact you if needed.
2. All plants are bareroot seedlings unless otherwise noted.
3. You can also find order forms and species descriptions online at <http://www.palousecd.org>
4. Orders must be received by December 15, 2014. There is a limited number of plants so orders will be filled as they are received.
5. Order confirmation, payment confirmation, and pickup reminders will be sent out via email. If you don't have email, you will receive a hard copy confirmation in the mail.
6. Plants will be available for pick up only on:

Friday, April 3, 2015 from 9:00am until 4:30pm
Saturday, April 4, 2015 from 9:00am until 1:00pm

Plants must be picked up at the Palouse Conservation District Office located at:
1300 NE Henley Ct
Pullman, WA 99163

7. Attention! Any order not picked up at the District office will be donated to conservation projects. These live plants must be planted immediately.

****PLEASE NOTE****

Our office can only accept checks and/or exact cash
for ALL transactions

Thank you! We hope that you enjoy your trees and shrubs!



Share Your Thoughts

Please use this card to share your thoughts with us regarding the services and programs that Palouse Conservation District should focus on next year.

What can YOUR Conservation District do for you? _____

What programs or services would you like to see Palouse CD continue to offer or develop? _____

If you will be joining us for The Palouse Conservation District Annual Listening Session on Wednesday, February 18, 2015, feel free to return this card with the following information:

I will be attending, and there will be _____ number of people in my party

Topics I would like to hear about at the Listening Session include:

Annual Surplus Plant Sale



Mark your calendar! The Palouse Conservation District's Annual Surplus Plant Sale is just around the corner. The event will take place on **Friday April 3rd from 9:00am - 4:30pm and Saturday April 4th from 9:00am – 1:00pm** at our office which is located at 1300 NE Henley Ct in Pullman.

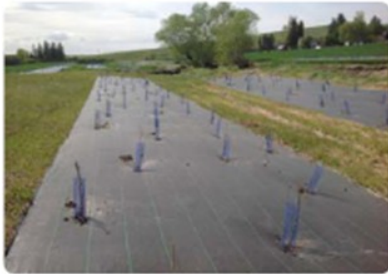
Overstocked conservation trees and shrubs will be available for purchase at a great price on the day of the surplus plant sale. Palouse Conservation District staff will be available on site to answer any questions that you may have. Whatever the size of the planting project you have in mind, the Palouse Conservation District is available to help develop a plan which will include the proper plants, materials and labor to help make it more successful.

The surplus tree sale will include a limited number of plants—so come early!

Reminder: If you ordered plants during our pre-sale, your plants will be available for pick up during the Annual Surplus Plant Sale.

Palouse Conservation Annual Report of Accomplishments

2014 Feature Accomplishment: Riparian restoration on the South Fork Palouse River



Top: Prior to project implementation, this site on the South Fork Palouse River lacked adequate riparian vegetation and had severe bank erosion in many places. Bottom: Project implementation included using native trees and shrubs to establish a one mile long, 50 foot riparian buffer on both sides of the river. Photos: Drew Schuldt, Palouse Conservation District

RESOURCE CHALLENGE The South Fork Palouse River has several water quality impairments that are a concern for watershed residents. To address these concerns, local landowners are stepping up to establish healthy, native vegetated strips along streams, called riparian buffers, to improve water quality and provide wildlife habitat. These riparian buffers improve water quality by providing protection from runoff from surrounding land uses, stabilizing eroding stream banks, and providing shade to reduce water temperatures.

PROJECT SUMMARY AND RESULTS Palouse Conservation District worked with local landowners to relocate livestock feeding areas away from the South Fork Palouse River, develop off-stream water facilities for livestock, create livestock waste storage facilities, plant native riparian buffers, and install mulch to enhance buffer establishment and reduce weed pressure. These projects will help address many of the pollutants for which the South Fork Palouse River is impaired, including ammonia, dissolved oxygen, fecal coliform bacteria, PCBs, chlorinated pesticides, temperature, and pH.

The next steps include completing projects to enhance upland areas, increase wildlife habitat, and restore adjacent wetland areas.

KEY PARTNERS: Department of Ecology; WA State Conservation Commission; AmeriCorps

Other Accomplishments



The Palouse Prairie Restoration Cost Share Program was launched to help landowners enhance Palouse Prairie sites with native grasses and forbs. Photo: Drew Schuldt, Palouse Conservation District



Through local partnerships, Water on Wheels was expanded in SE Washington. This EnviroScape Model was one tool used to teach about water quality. Photo: Mikaela Legarsky, Palouse Conservation District AmeriCorps Member



Participants view a demonstration of advanced spray systems through precision spraying during a Precision Agriculture Series event. Photo: Jennifer Boie, Palouse Conservation District

More Work to Do!

- **Direct Seed Partnership:** Expanding direct seed and precision agriculture education and cost-share.
- **Palouse River Basin Riparian Restoration:** Partnering with voluntary landowners to improve water quality and enhance wildlife habitat.
- **Palouse Prairie Phase III:** Conducting an inventory of Palouse Prairie remnant sites.
- **Snake River Salmon Recovery:** Providing outreach to landowners on opportunities to benefit salmon recovery.

CRP Sign Up or Take Out? A Wildlife Perspective

By Erik Lewis, WDFW Private Lands Biologist

The Conservation Reserve Program (CRP) provides excellent opportunities for soil and water conservation, and for wildlife habitat. Many CRP practices can have a direct influence on wildlife and the amount of habitat available to wildlife in a given area. Some practices can have a greater influence on wildlife based on cover type, but make no mistake CRP is a very important aspect of wildlife habitat throughout the nation. During these times of high crop prices, CRP enrollments have shrunk, which leaves many of us wondering what effects this will have on wildlife populations. Whitman County had approximately 43,000 acres of CRP scheduled to expire in 2013, a very significant amount of acres when considering wildlife.



I have been working on the boundary of conservation and agriculture for years and I understand the issues that today's farmers face. A living has to be made and the world needs the crops that we grow here on the Palouse. Nevertheless, there are CRP options that allow producers to maximize production from their most productive acres while leaving less productive areas for wildlife habitat. For those who are considering taking acres out of the CRP program, there are CRP practices that target areas that are difficult to farm or that protect crucial wildlife travel corridors. These practices provide high-quality habitat on fewer acres than whole-farm CRP enrollments of the past. For those who are considering leaving acres in CRP there are options to improve the habitat value of those CRP acres as well.

"Continuous CRP" offers options for producers who want to farm those higher quality acres but still want to provide wildlife habitat. "CP15A" buffers can be very important to wildlife and can eliminate those steep tough to farm slopes. Another CRP practice, which is new to Washington State, is the "CP33" field border practice and this practice can be highly beneficial to wildlife as travel corridors between larger pieces of habitat. I spent 5 years working with this practice in the mid-west and have seen firsthand the wildlife benefits. The CP33 practice is a wildlife specific practice designed to provide nesting and brood-rearing habitat for upland birds. Like most CRP practices, these continuous CRP practices also help control soil erosion as well help improve water quality.



If you are interested in learning more about conservation programs for wildlife habitat or learning more about CRP and wildlife; please contact WDFW Private Lands Biologist Erik Lewis at 509-595-1447 or erik.lewis@dfw.wa.gov.



Palouse News
Palouse Conservation District
1300 NE Henley Ct.
Pullman, WA 99163

NONPROFIT ORG.
U.S. POSTAGE PAID
PULLMAN, WA
PERMIT NO. 95

RETURN SERVICE REQUESTED



Meet our New AmeriCorps Member



The Palouse Conservation District welcomes Hannah Liss as the 2014-2015 AmeriCorps member. After moving from her Illinois home-town, Hannah graduated from the University of South Carolina with a Bachelor's Degree in Environmental Science. She was drawn to this particular AmeriCorps position due to its focus on conservation, restoration, and education.

During her term of service, Hannah will be assisting with riparian restoration projects. Hannah will also serve as the Wheat Week and Water on Wheels educator for Whitman County providing conservation education to children in grades K-6.

As Hannah continues her service with The Palouse Conservation District, she is eager to take advantage of all that the beautiful Palouse has to offer!

The Board of Supervisors meets monthly on the 2nd Tuesday at the District Office (call for meeting time)
There is no meeting in August.

Board of Supervisors

Larry Cochran, Chair (1990)
Chris Heitstuman (1998)
Keith Kopf (1997)
Mark Whitmore (1998)
Joan Folwell (2010)

Associate Board Members

Greg Jones (1992)
Dave Stout (2010)
Al Bruns (2011)
Patrick O'Neill (2011)
Ben Moehrle (2012)

District Staff

Jennifer Boie, District Manager
Pam Furchtenicht, Administrative Coordinator
Drew Schuldt, Natural Resource Coordinator
Hannah Liss, AmeriCorps Member

Contact Information:

(509) 332-4101 phone
(509) 332-0459 fax
palousecd@palousecd.org